



Peter Barry
working harder for you

Tel: 020 8360 4777
www.pbea.co.uk



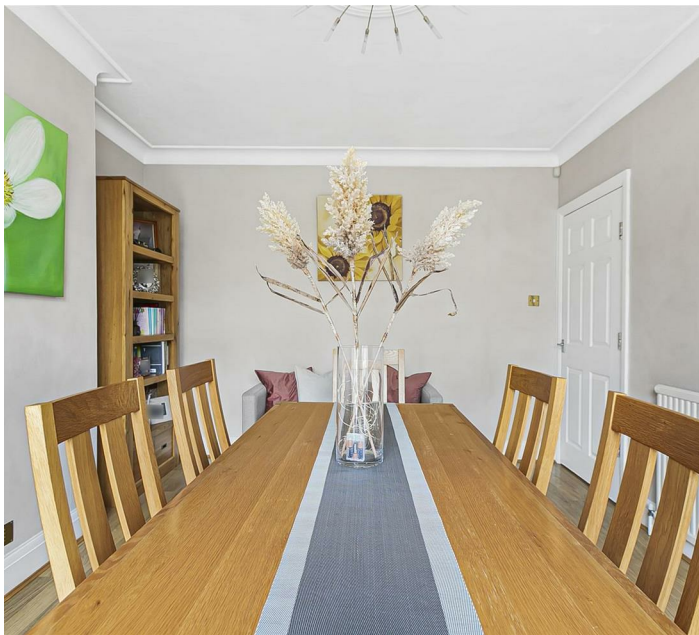
Ridge Avenue, London, N21 2AR

Peter Barry are pleased to offer this wonderful 1930's four bedroom semi detached family home located perfectly for easy access to transport facilities.

This spacious house is conveniently located for road links such as the A10 and the A406. This property offers lots of natural light throughout plus has excellent scope to further extend to the rear (STPP) & has the loft converted into a wonderful Master bedroom with en suite.

- Two reception rooms
- Utility room
- Four good size bedrooms
- Garage via shared drive
- Close to local shops
- Master bedroom with En suite
- Great transport links
- 0.8 miles to the station

£800,000



Energy Efficiency Rating		Current	Potential
<i>Very energy efficient - lower running costs</i>			
(92 plus)	A		
(81-91)	B		85
(69-80)	C	69	
(55-68)	D		
(39-54)	E		
(21-38)	F		
(1-20)	G		
<i>Not energy efficient - higher running costs</i>			
England & Wales		EU Directive 2002/91/EC 